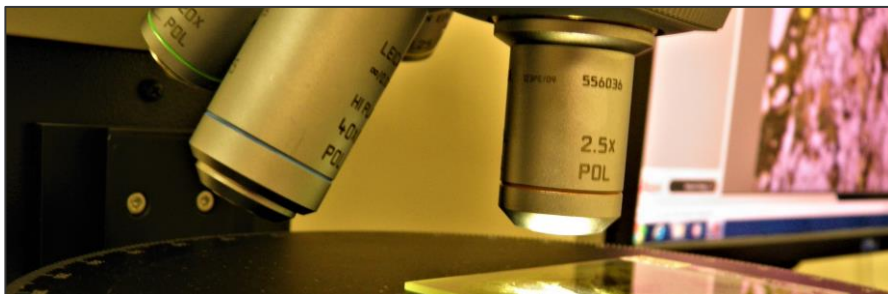
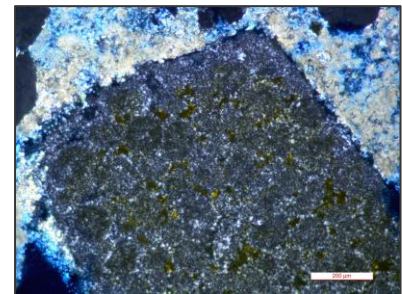
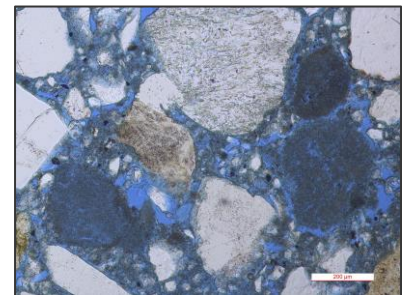
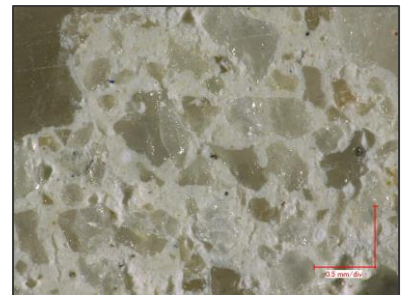
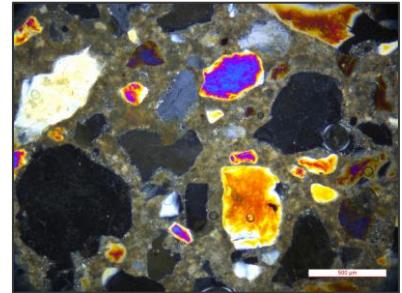


MORTAR EVALUATIONS

Historic restoration and preservation of brick masonry buildings is a rapidly growing construction field, and mortar evaluations are a required initial step for these projects. This is because the proportions of the existing historic mortar will dictate the proportions of the new repointing mortar. SGS TEC Services experienced team of professional geologists, petrographers and professional engineers evaluate the mortar within our ISO 17025, AASHTO R18, and Army Corps of Engineers accredited laboratory in accordance with ASTM C1324.

The evaluations combine chemical analysis techniques and petrographic examinations on the mortar to determine the following characteristics:

- Sand lithology, gradation, texture, and color
- Type of cementitious material and lime content
- Air content and presence of entrained air voids
- Porosity, quality, and durability
- Equivalent ASTM C270 mortar type
- Indications of previous repointing material
- Recommended proportions of repointing mortar



Brian J. Wolfe, PE

Principal Engineer
 Petrography Group Manager

Phone: +01 770 995 8000
 Direct: +01 770 817 2518
 E-mail: Brian.Wolfe@sgs.com

Terry L. Vines, PG

Principal Petrographer
 Professional Geologist

Phone: +01 770 995 8000
 Direct: +01 770 817 2533
 E-mail: Terry.Vines@sgs.com